

TPC sheath



U345

Application

This sheath is used for protection of underground cables. It is available in ring (with draw needle) or in bar.

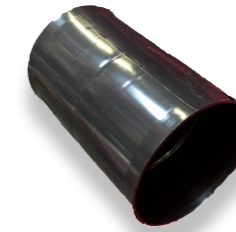
Description

- This sheath offers a compressive strength of 450 N (maximum deformation of 5%).
 - This sheath offers an impact resistance in accordance of EN 61386-24 standard.
 - This product is delivered in ring (bendable) or in bar (rigid).
 - Installation and operating temperature is between -10°C et +90°C.
 - The protection degree is IP44.
 - The sheath is made with allogen free materials and without heavy metals.
- This product meets the requirements of the **EN 61386-1** and **EN 61386-24** standards.

Code	Designation	Nominal diameter (mm)	Internal diameter (mm)	Tolerance	Sheath length (m)	Weight (kg)	Sales unit
SHEATH DRUM							
U345_40	TPC SHEATH DRUM 50M LENGTH DIAM 40	40	30	+0.8	50	6.000	10
U345_50	TPC SHEATH DRUM 50M LENGTH DIAM 50	50	37	+1	50	7.500	10
U345_63	TPC SHEATH DRUM 50M LENGTH DIAM 63	63	47	+1.2	50	9.375	10
U345_75	TPC SHEATH DRUM 50M LENGTH DIAM 75	75	58.5	+1.4	50	11.250	10
U345_90	TPC SHEATH DRUM 50M LENGTH DIAM 90	90	74	+1.7	50	14.000	10
U345_110	TPC SHEATH DRUM 50M LENGTH DIAM 110	110	90	+2	50	15.500	10
U345_125	TPC SHEATH DRUM 50M LENGTH DIAM 125	125	102	+2.3	50	15.750	10
U345_160	TPC SHEATH DRUM 50M LENGTH DIAM 160	160	135	+2.9	25	14.500	10
U345_200	TPC SHEATH DRUM 50M LENGTH DIAM 200	200	169	+3.6	25	15.000	10
SHEATH TUBE							
U346_90	TPC SHEATH TUBE 6M LENGTH DIAM 90	90	74	+1.7	1038*	1.680	173
U346_110	TPC SHEATH TUBE 6M LENGTH DIAM 110	110	90	+2	690*	1.860	115
U346_125	TPC SHEATH TUBE 6M LENGTH DIAM 125	125	102	+2.3	516*	1.870	86
U346_160	TPC SHEATH TUBE 6M LENGTH DIAM 160	160	135	+2.9	318*	3.000	53
U346_200	TPC SHEATH TUBE 6M LENGTH DIAM 200	200	169	+3.6	210*	3.600	35
U346_250	TPC SHEATH TUBE 6M LENGTH DIAM 250	250	212	+4.5	120*	4.500	20

Sheath lengths, delivered in 6m bars, are expressed per pallet.

Junction sleeve



U347

Application

This sleeve allows connection between two ends of sheaths.

Code	Designation	Nominal diameter (mm)	Tolerance	Weight (kg)	Sales unit
U347_40	TPC SHEATH JUNCTION SLEEVE DIAM 40	40	+0.8	0.010	30
U347_50	TPC SHEATH JUNCTION SLEEVE DIAM 50	50	+1	0.013	30
U347_63	TPC SHEATH JUNCTION SLEEVE DIAM 63	63	+1.2	0.017	30
U347_75	TPC SHEATH JUNCTION SLEEVE DIAM 75	75	+1.4	0.020	30
U347_90	TPC SHEATH JUNCTION SLEEVE DIAM 90	90	+1.7	0.022	30
U347_110	TPC SHEATH JUNCTION SLEEVE DIAM 110	110	+2	0.024	5
U347_125	TPC SHEATH JUNCTION SLEEVE DIAM 125	125	+2.3	0.028	5
U347_160	TPC SHEATH JUNCTION SLEEVE DIAM 160	160	+2.9	0.036	5
U347_200	TPC SHEATH JUNCTION SLEEVE DIAM 200	200	+3.6	0.045	1
U347_250	TPC SHEATH JUNCTION SLEEVE DIAM 250	250	+4.5	0.060	1

Separator



U348

Application

This separator allows to facilitate the installation of sheaths and to split each one.

Code	Designation	Sheath diameter (mm)	Number of tubes per separator	Weight (kg)	Sales unit
U348_63-4	TPC SHEATH SEPARATOR DIAM 63-4	63	4	0.010	50
U348_63-8	TPC SHEATH SEPARATOR DIAM 63-8	63	8	0.010	50
U348_75-4	TPC SHEATH SEPARATOR DIAM 75-4	75	4	0.010	50
U348_90-4	TPC SHEATH SEPARATOR DIAM 90-4	90	4	0.011	50
U348_110-4	TPC SHEATH SEPARATOR DIAM 110-4	110	4	0.011	50
U348_110-8	TPC SHEATH SEPARATOR DIAM 110-8	110	8	0.023	50
U348_125-4	TPC SHEATH SEPARATOR DIAM 125-4	125	4	0.015	50
U348_160-4	TPC SHEATH SEPARATOR DIAM 160-4	160	4	0.025	50
U348_200-4	TPC SHEATH SEPARATOR DIAM 200-4	200	4	0.035	50
U348_200-8	TPC SHEATH SEPARATOR DIAM 200-8	200	8	0.040	50

Sheath end cap



U349

Application

This sheath end cap allows to seal the sheath by closing its end.

Code	Designation	Nominal diameter (mm)	Weight (kg)	Sales unit
U349_40	TPC SHEATH END CAP DIAM 40	40	0.010	50
U349_50	TPC SHEATH END CAP DIAM 50	50	0.013	50
U349_63	TPC SHEATH END CAP DIAM 63	63	0.017	50
U349_75	TPC SHEATH END CAP DIAM 75	75	0.030	50
U349_110	TPC SHEATH END CAP DIAM 110	110	0.032	50
U349_125	TPC SHEATH END CAP DIAM 125	125	0.040	50
U349_160	TPC SHEATH END CAP DIAM 160	160	0.049	50
U349_200	TPC SHEATH END CAP DIAM 200	200	0.060	50
U349_250	TPC SHEATH END CAP DIAM 250	250	0.080	50